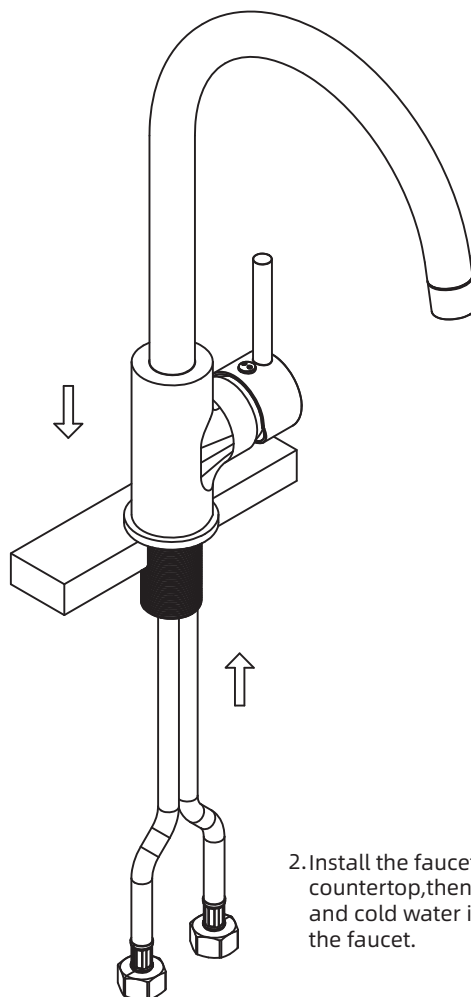
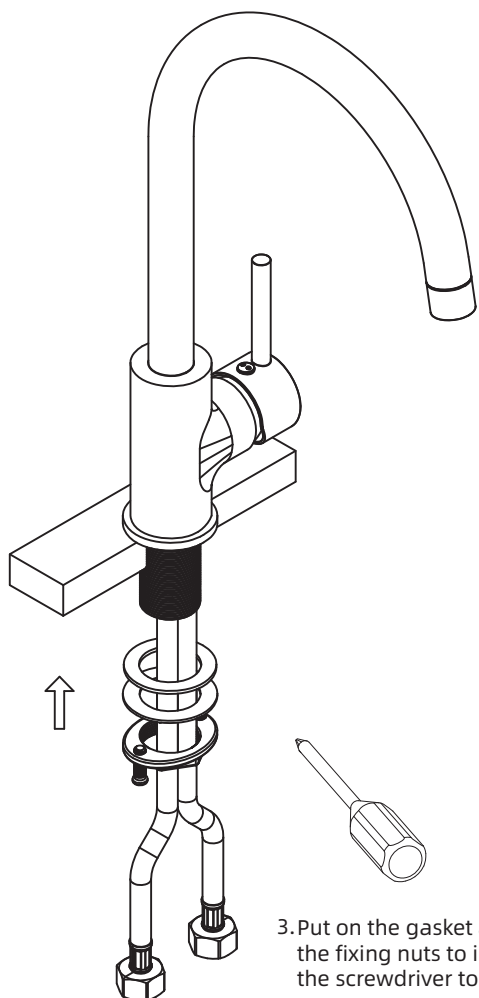


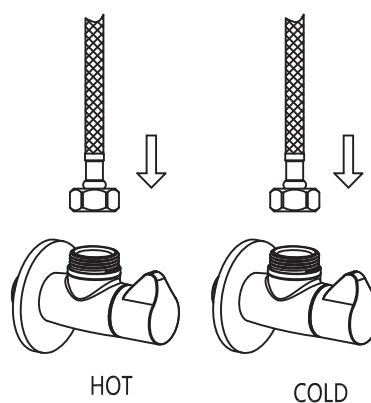
1. Rotate the screw tube and install into the faucet ,then remove the nut and gasket.



2. Install the faucet down from the countertop,then screw in the hot and cold water inlet hose under the faucet.



3. Put on the gasket and screw on the fixing nuts to install. Then use the screwdriver to step up and fix.



4. Finally,connect the cold and hot water inlet hose to the valve of supply water and finish installation.Please must pay attention to open the valve to clear the sundries in the pipe before connecting the valve from being blocked.